



Signing

When we think about communicating with our children it is important to think beyond speech. A Total Communication approach means that we use every available resource to help us communicate with the child to aid their understanding and give them the opportunity to 'tell us' what they want or need.

Signing can be used as a tool to help aid communication with all children and research has shown that those children who are supported with sign are less frustrated. They are also able to indicate their needs even if they cannot speak.

Using signs with a child not only helps their communication skills but also encourages essential skills such as eye contact and turn taking.

When signing we use the spoken word alongside the sign. In a sentence it is only necessary to sign the **information carrying words (ICW)** helping to clarify the message and make understanding easier for the child. Sign is used to support our speech, providing a visual representation of the words we have spoken. By using sign when we speak we naturally slow down and are clearer.





Signing

This is a selection of signs we use at Crownbridge School with your child.



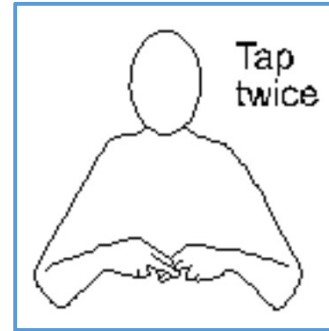
Please



Thank you



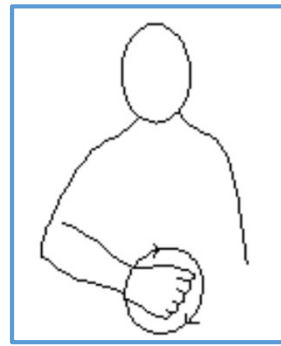
Mum



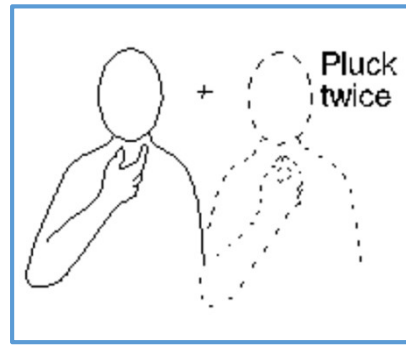
Dad



Sorry



Hungry



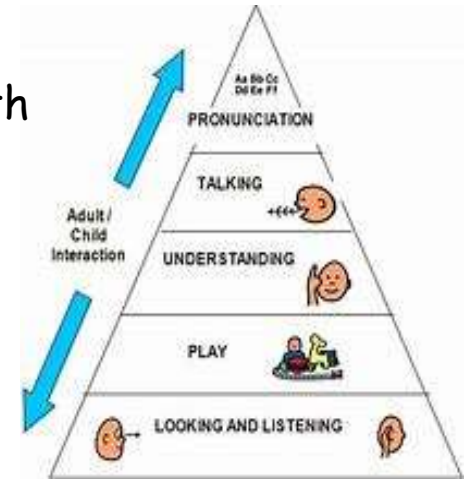
Thirsty



School



Home



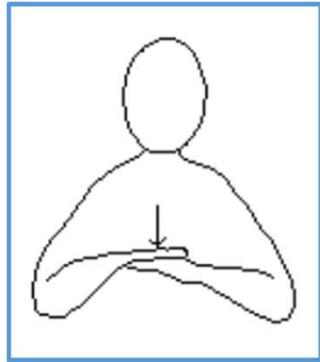


Signing

This is a selection of signs we use at Crownbridge School with your child.



Toilet



Sit down



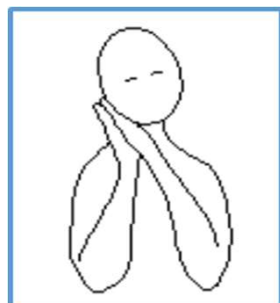
Stop



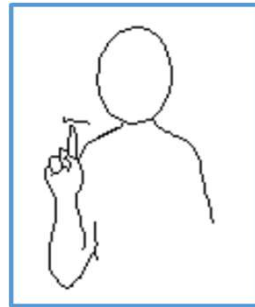
Listen



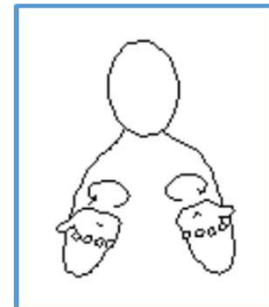
Help



Sleepy/tired



What



Where



More

